

Integration Note

| | |
|-------------------------|-------------------------|
| Manufacturer: | Absolute Acoustics |
| Model Number(s): | Nexos NX-4 / NX6 |
| g! Core Module Version: | 8.7.602 |
| Driver Developer: | Zoom Digital Home |
| Document Revision Date: | 26 janeiro 2024 |

Overview

This driver is for Absolute Acoustics Nexos audio matrix. It's support NX-4 and NX-6 models.

Supported Features

- **Source Switching:** select any of sources.
- **Zone On/Off Control:** Two-way status and control of on/off.
- **Volume Control:** Two-way volume control for each discrete output.

| |
|--|
| Any feature not specifically noted as supported should be assumed to be unsupported. |
|--|

Driver License

This driver works for a trial period. After that it's requires a license key to function.

License keys can be obtained contacting us by drivers@zoomdigitalhome.com.br. License keys are issued on a per controller basis. You only need a single license key for multiple instances on the same controller.

License price is US\$ 75.00

Dealer Support

Any help or support questions, please, contact us by drivers@zoomdigitalhome.com.br.

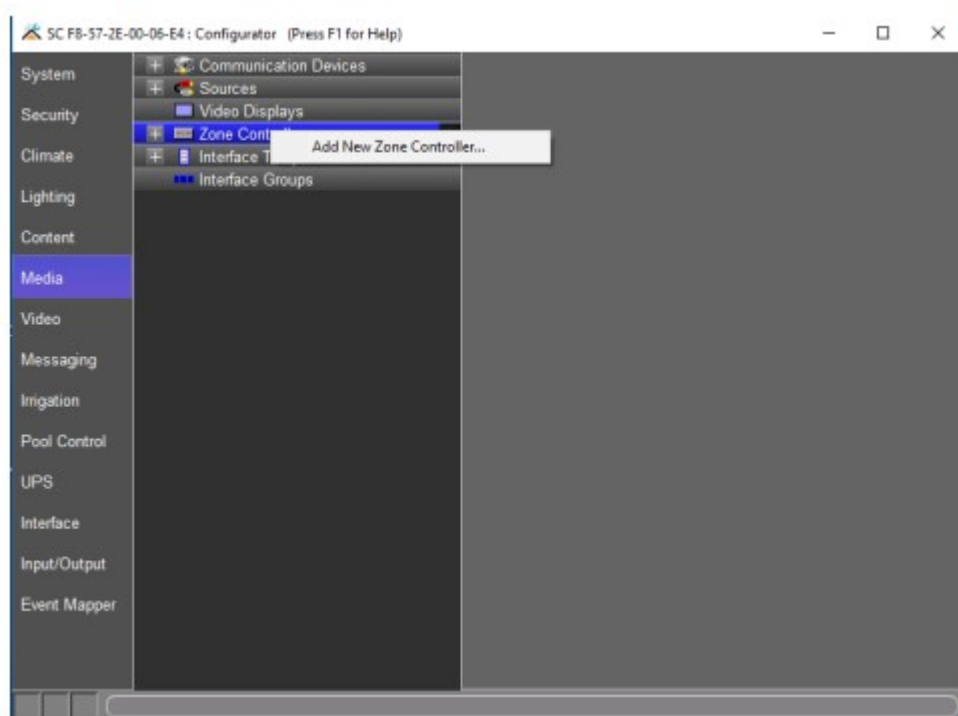
Device Setup

Set up your device as recommended by manufacturer's instructions.

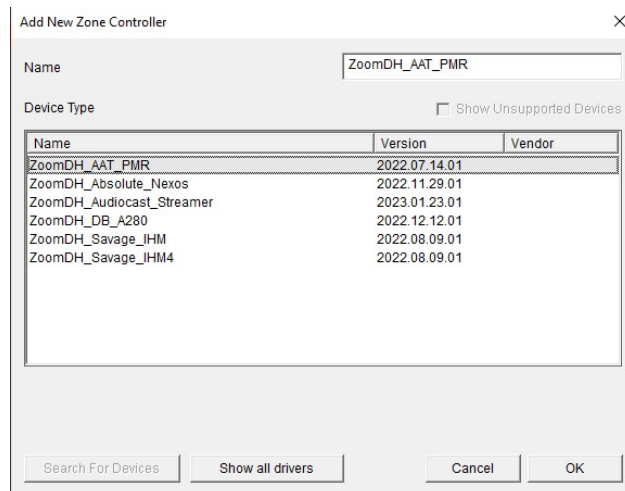
Connect device to Elan Controller with proper serial RS232 cable.

Installation Process

1. Please check the latest driver version on www.zoomdigitalhome.com.br/drivers
2. Under the Media tab in configurator, add a new Zone Controller.



3. Use the Search Folder button to point Configurator to the location of you saved the driver.



4. Select the driver and click OK.

Common Mistakes

1. Incorrect serial RS232 cable pinout.

Changelog

2024.01.26.01 – Removed delay between commands.
2022.06.09.01 – Initial revision.

ELAN Developer Partner Information

This ELAN driver was written and supported by:



www.zoomdigitalhome.com.br
drivers@zoomdigitalhome.com.br