

Integration Note

Manufacturer:	All Sync
Model Number(s):	AS-MX 44/88 HDMI Matrix
g! Core Module Version:	8.7.602
Driver Developer:	Zoom Digital Home
Document Revision Date:	17 February 2023

Overview

This driver is for Angular All Sync AS-MX44 and AS-MX88 HDMI matrix.

Supported Features

- **Source Switching:** select any of sources.
- **Reboot:** Reboot matrix.

Any feature not specifically noted as supported should be assumed to be unsupported.
--

Driver License

This driver works for a trial period. After that it's requires a license key to function.

License keys can be obtained contacting us by drivers@zoomdigitalhome.com.br. License keys are issued on a per controller basis. You only need a single license key for multiple instances on the same controller.

License price is US\$ 75.00

Dealer Support

Any help or support questions, please, contact us by drivers@zoomdigitalhome.com.br.

Device Setup

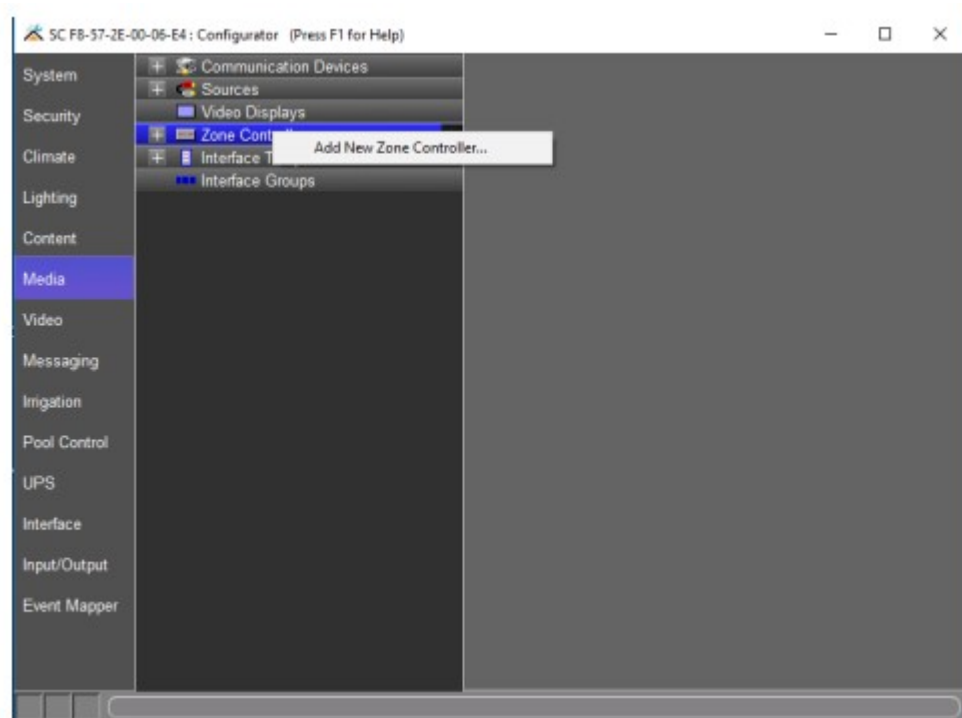
Set up your device as recommended by manufacturer's instructions.

Pay attention to IP address and communication port.

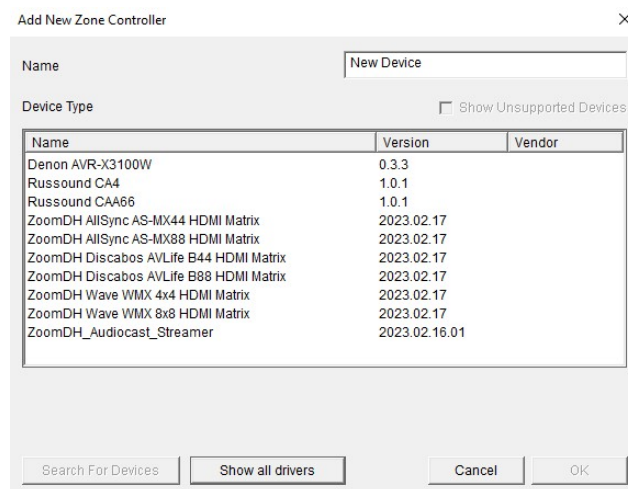
Set a static IP or reserve it on DHCP server.

Installation Process

1. Please check the latest driver version on www.zoomdigitalhome.com.br/drivers
2. Under the Media tab in configurator, add a new Zone Controller.



3. Use the Search Folder button to point Configurator to the location of you saved the driver.



4. Select the driver and click OK.

Common Mistakes

1. Incorrect IP address or TCP port settings.

ELAN Developer Partner Information

This ELAN driver was written and supported by:



www.zoomdigitalhome.com.br
drivers@zoomdigitalhome.com.br