

Integration Note

Manufacturer:	LinkPlay
Model Number(s):	LinkPlay
g! Core Module Version:	8.9.660
Driver Developer:	Zoom Digital Home
Document Revision Date:	08 August 2025

Overview

This driver is for devices with Linkplay streamer built in. Many hardware brands use the linkplay API and can be controlled by this driver.

AAT, Arylic, AudioCast, iEast, SoundSmart, SoundStream, etc.

Supported Features

- **Source Switching:** select any available source.
- **Volume Control:** volume control for each discrete output.
- **Streaming Control:** play, pause, stop, next, previous.
- **Media Metadata:** show the audio track information.
- **Media Cover:** show the audio streaming cover.
- **Preset:** play selected preset 1-10.
- **Play Queue:** show the music or radio recently played.

Any feature not specifically noted as supported should be assumed to be unsupported.

Driver License

This driver works for a trial period. After that it requires a license key to function.

License keys can be obtained contacting us by drivers@zoomdigitalhome.com.br. License keys are issued on a per controller basis. You only need a single license key for multiple instances on the same controller.

License price is US\$ 100.00

Device Setup

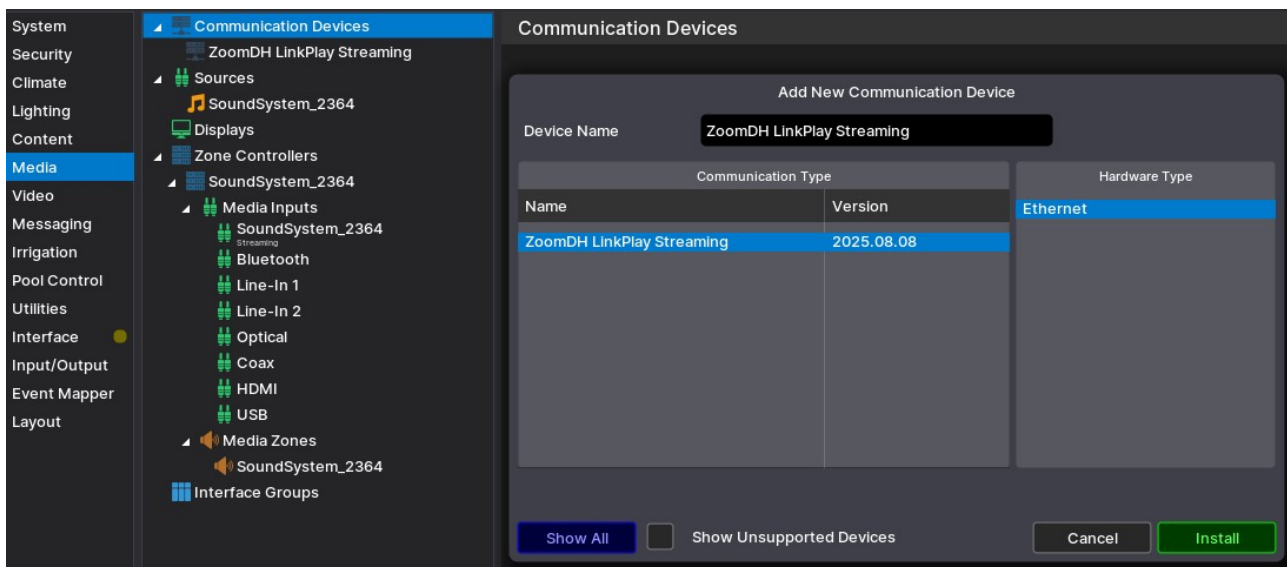
Set up your device as recommended by manufacturer's instructions.

Pay attention to IP address and communication port.

Set a static IP or reserve it on DHCP server.

Installation Process

1. Please check the latest driver version on www.zoomdigitalhome.com.br/drivers.
2. Under the Media tab in configurator, add a new Communication Device.
3. Use the Search Folder button to point Configurator to the location of you saved the driver.
4. Select the file "ZoomDH_LinkPlay_Streaming.EDRVC".



5. Install the ZoomDH LinkPlay Streaming.
6. In the ZoomDH LinkPlay Streaming properties screen, click on the Discover Devices button.
7. The driver will be looking for LinkPlay devices on the local network and add them to the project.
8. The driver will add a pair of drivers ZoomDH LinkPlay Service and ZoomDH LinkPlay Device to each device found. The IP address and port are auto populated.
9. The controller streaming input is auto bound to the streaming source.
10. Feel free to change the streamer's name.
11. Configure the other input sources as you need.
12. Done.

Common Mistakes

1. IP device settings are not correctly fixed.

Changelog

2025.08.08 – Initial revision.

Nice Developer Partner Information

This Nice driver was written and supported by:



www.zoomdigitalhome.com.br

drivers@zoomdigitalhome.com.br

Any help or support questions, please, contact us by drivers@zoomdigitalhome.com.br.