

## Integration Note

Manufacturer:	MolSmart
Model Number(s):	<b>Relay Board 8/16/32</b>
g! Core Module Version:	8.7.602
Driver Developer:	Zoom Digital Home
Document Revision Date:	21 April 2023

### Overview

This is a two-way driver to integrate Lighting MolSmart Relay Boards by ethernet connection.

### Supported Features

- **Switch:** Control module outputs with feedback status.
- **Input Events:** Report inputs events to Elan system.

Any feature not specifically noted as supported should be assumed to be unsupported.

### Driver License

This driver works for a trial period. After that it's requires a license key to function.

License keys can be obtained contacting us by [drivers@zoomdigitalhome.com.br](mailto:drivers@zoomdigitalhome.com.br). License keys are issued on a per controller basis. You only need a single license key for multiple instances on the same controller.

License price is US\$ 75.00

### Dealer Support

Any help or support questions, please, contact us by [drivers@zoomdigitalhome.com.br](mailto:drivers@zoomdigitalhome.com.br).

## Device Setup

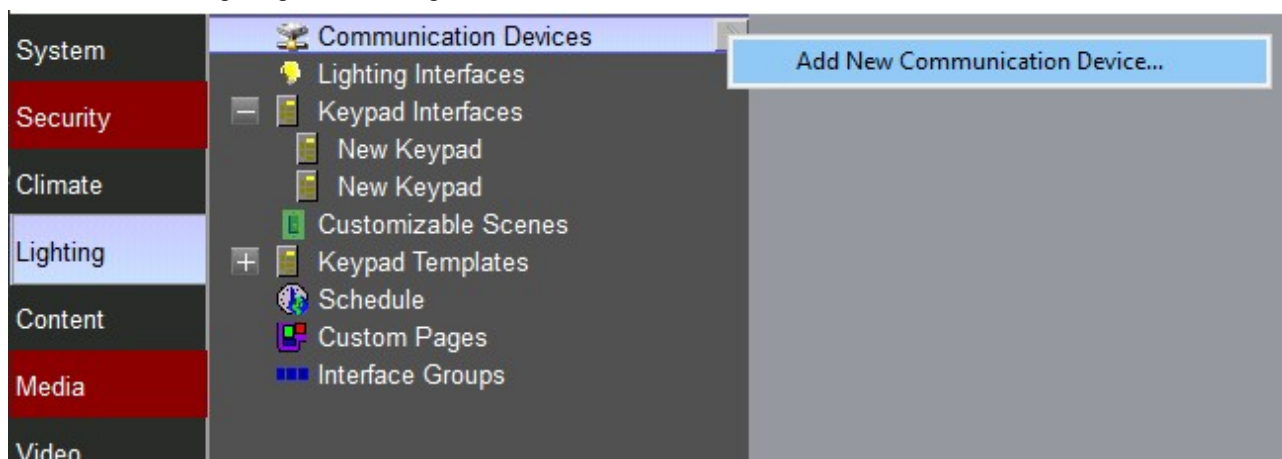
Set up your device as recommended by manufacturer's instructions.

Pay attention to IP address and communication port.

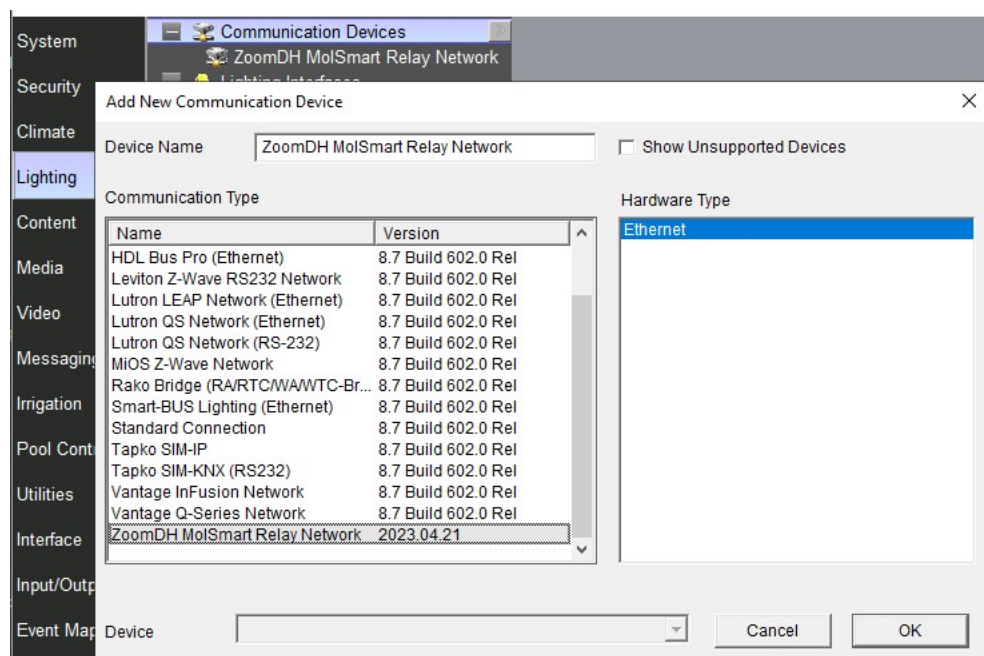
Set a static IP or reserve it on DHCP server.

## Installation Process

1. Please check the latest driver version on [www.zoomdigitalhome.com.br/drivers](http://www.zoomdigitalhome.com.br/drivers)
2. Under the Lighting tab in configurator, add a new Communication Device.



3. Use the Search Folder button to point Configurator to the location of you saved the driver.



4. Select the driver and click OK.
5. The Communication driver will add additional drivers of Lighting and Input/Output.
6. Set up the IP Address of device.

## Common Mistakes

1. Incorrect IP address or TCP port settings.

## ELAN Developer Partner Information

This ELAN driver was written and supported by:



[www.zoomdigitalhome.com.br](http://www.zoomdigitalhome.com.br)

[drivers@zoomdigitalhome.com.br](mailto:drivers@zoomdigitalhome.com.br)