

## Integration Note

Manufacturer:	MolSmart
Model Number(s):	<b>IR-RF Gateway</b>
g! Core Module Version:	8.7.602
Driver Developer:	Zoom Digital Home
Document Revision Date:	09 September 2023

### Overview

This driver is to integrate MolSmart IR-RF gateway to control blind/shades with RF 433 Mhz or Somfy RTS motors, and provide 3 IR ports to any IR device

### Supported Features

- **Open/Close/Stop:** Control the open, close and stop of blind/shades motors.
- **IR Port:** 3 IR port gateway to connect any IR Elan device driver.

Any feature not specifically noted as supported should be assumed to be unsupported.
--------------------------------------------------------------------------------------

### Driver License

This driver works for a trial period. After that it's requires a license key to function.

License keys can be obtained contacting us by [drivers@zoomdigitalhome.com.br](mailto:drivers@zoomdigitalhome.com.br). License keys are issued on a per controller basis. You only need a single license key for multiple instances on the same controller.

License price is US\$ 75.00

### Dealer Support

Any help or support questions, please, contact us by [drivers@zoomdigitalhome.com.br](mailto:drivers@zoomdigitalhome.com.br).

## Device Setup

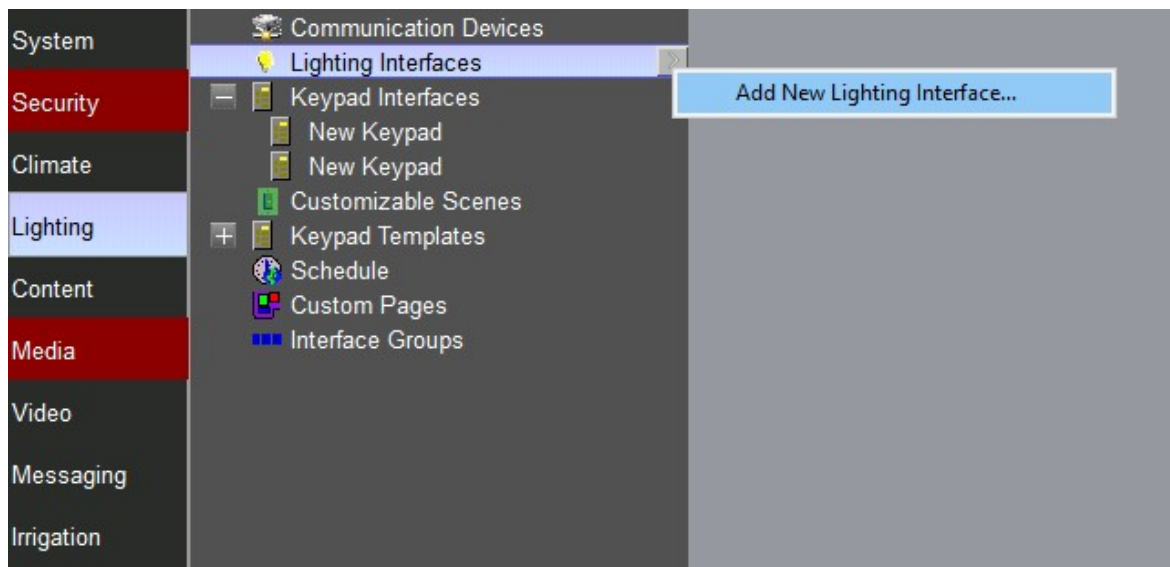
Set up your device as recommended by manufacturer's instructions.

Pay attention to IP address and communication port.

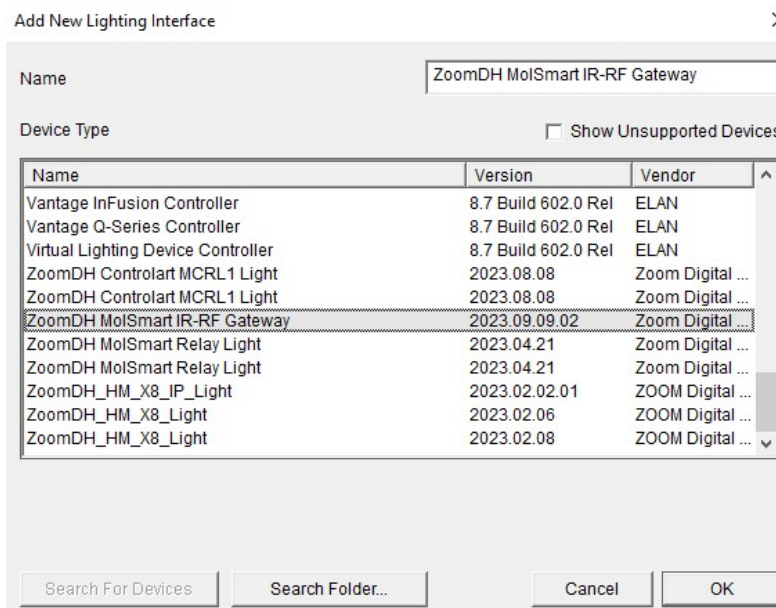
Set a static IP or reserve it on DHCP server.

## Installation Process

1. Please check the latest driver version on [www.zoomdigitalhome.com.br/drivers](http://www.zoomdigitalhome.com.br/drivers)
2. Under the Lighting tab in configurator, add a new Lighting Interface.



3. Use the Search Folder button to point Configurator to the location of you saved the driver.



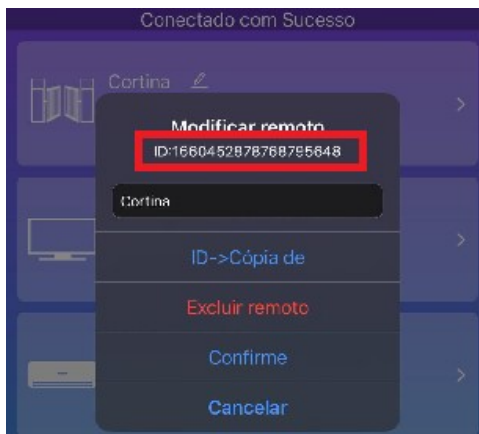
4. Select the driver and click OK.

5. Set up SmartRF Pro settings:
  - a. **Serial Number:** inform the serial number of device, see the product tag.
  - b. **PWD:** inform the password, on product tag too.
  - c. **IP Address:** set the IP of device.
  - d. **Port:** set the TCP port of device (default 80).
6. Under Lightning Devices, add New Device.
7. Set a Device Name and select Device Type as Shade.
8. On new device created, set up:
  - a. Device ID – device control ID copied from iDoor APP\*
  - b. Open ID – id of button to open the blind/shade (default 1)
  - c. Stop ID – id of button to open the blind/shade (default 2)
  - d. Close ID – id of button to open the blind/shade (default 3)

The screenshot shows the Zoom Digital Home web interface. On the left, a sidebar menu has 'Lighting' selected. The main content area is titled 'Lighting Device: Shade'. It contains a form with the following fields and values:

- Name: Shade
- Location: Terreo: Sala
- System #: 12541
- Device Type: Shade
- Device Classification: Shade/Simple
- Display Name: Shade
- Hide Device from UI: No
- Device ID: 1660452878768795648
- Open ID: 1
- Stop ID: 2
- Close ID: 3

At the bottom of the form, there are three buttons: 'Begin Raise', 'Begin Lower', and 'End Raise/Lower'.



- Device ID

9. Set TCP Server port (default 4998) on TCP IR Configuration:



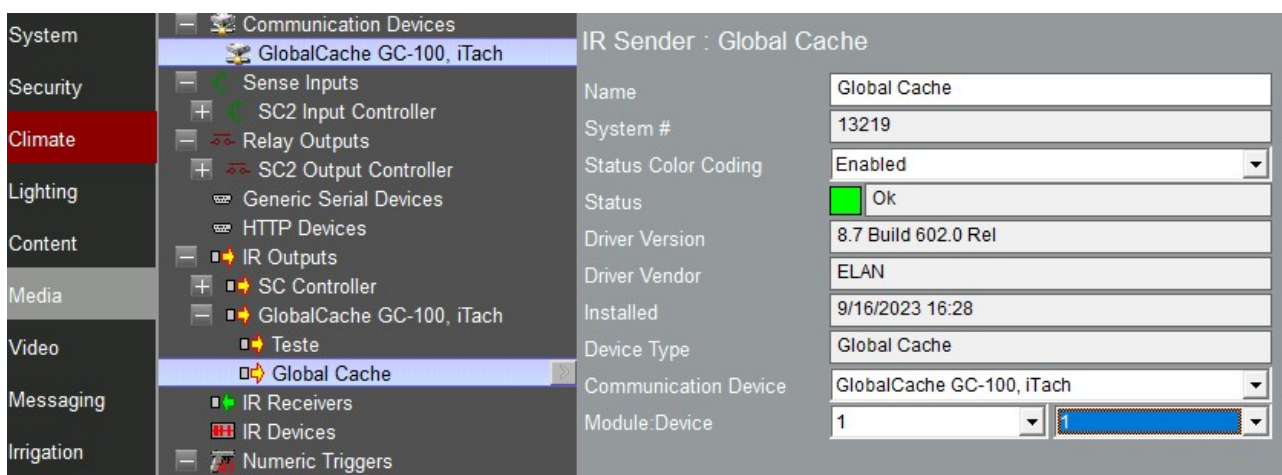
This port will be used on IR device connections.

10. Setup IR ports:

- Go to Input/Output -> Communication Devices -> Add New Communication Device
- Add new GlobalCache GC-100, iTach



- Set the IP address of GlobalCache to the Elan Controller IP
- Default port is 4998. If you have a second MolSmart IR-RF gateway or changed the TCP server port on MolSmart device driver, you must have change it here too.
- Go to Input/Output -> IR Outputs -> Add New IR Sender
- Add new Global Cache IR Output



- Setup Global Cache IR Output
- In Communication Device, select the interface added in step "b"
- Set Module to "1" and Device to the number of IR port you want to use (1\*, 2 or 3)

1\* - Port 1 and blaster sharing same channel.

## Common Mistakes

1. Incorrect IP address or TCP port settings.
2. Incorrect Channel ID or Button ID settings.
3. Incorrect TCP Server Port Setup.

## ELAN Developer Partner Information

This ELAN driver was written and supported by:



[www.zoomdigitalhome.com.br](http://www.zoomdigitalhome.com.br)  
[drivers@zoomdigitalhome.com.br](mailto:drivers@zoomdigitalhome.com.br)