

Integration Note

Manufacturer:	Hikvision
Model Number(s):	Access Control
g! Core Module Version:	8.7.602
Driver Developer:	Zoom Digital Home
Document Revision Date:	27 July 2024

Overview

This driver is for Hikvision Access Control devices.

Mostly models are compatible.

Supported Features

- **Access Events:** access events with user identification.
- **Door Control:** control to lock/unlock the door lock.
- **VMD Events:** video motion detection events.

Any feature not specifically noted as supported should be assumed to be unsupported.
--

Driver License

This driver works for a trial period. After that it's requires a license key to function.

License keys can be obtained contacting us by drivers@zoomdigitalhome.com.br. License keys are issued on a per controller basis. You only need a single license key for multiple instances on the same controller.

License price is US\$ 75.00

Dealer Support

Any help or support questions, please, contact us by drivers@zoomdigitalhome.com.br.

Device Setup

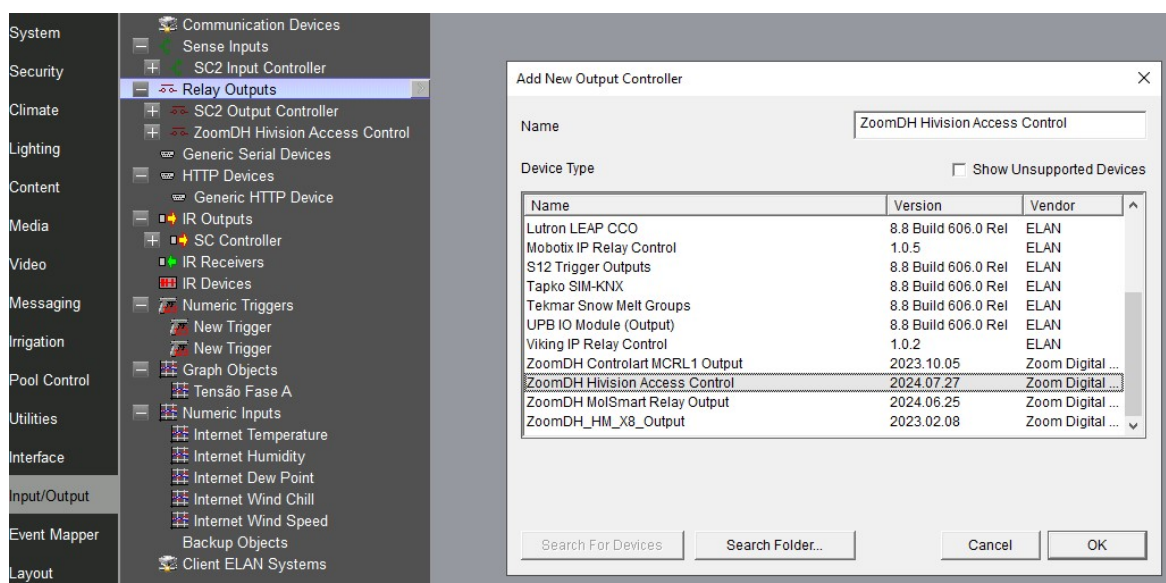
Set up your device as recommended by manufacturer's instructions.

Pay attention to IP address and communication port.

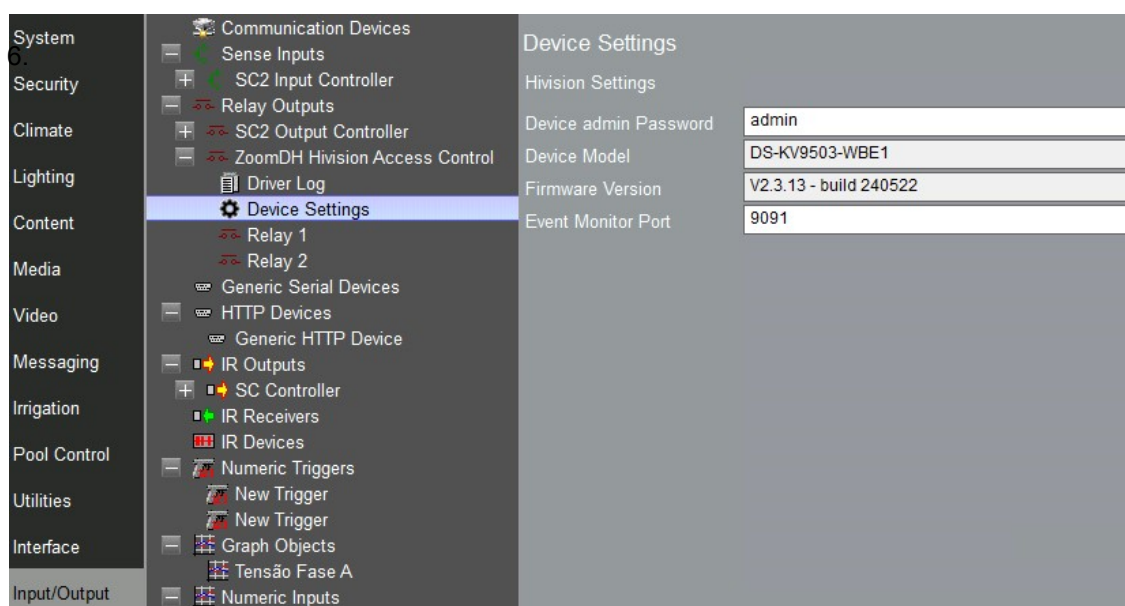
Set a static IP or reserve it on DHCP server.

Installation Process

1. Please check the latest driver version on www.zoomdigitalhome.com.br/drivers
2. Under the Input/Output tab in configurator, add a new Relay Outputs.
3. Use the Search Folder button to point Configurator to the location of you saved the driver.



4. Select the driver and click OK.
5. On the Device Settings, set the "admin" device password.



Common Mistakes

1. Incorrect IP address or TCP port settings.
2. Incorrect device admin password.
3. Multiple drivers instances with same Event Port. Change the event port to be unique on each driver instance.

Nice Developer Partner Information

This Nice driver was written and supported by:



www.zoomdigitalhome.com.br
drivers@zoomdigitalhome.com.br